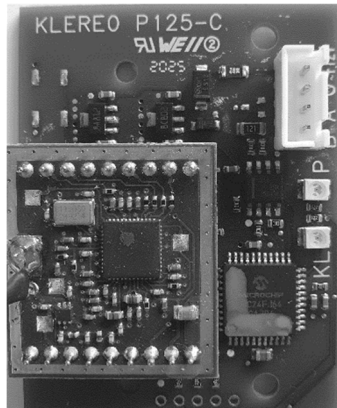
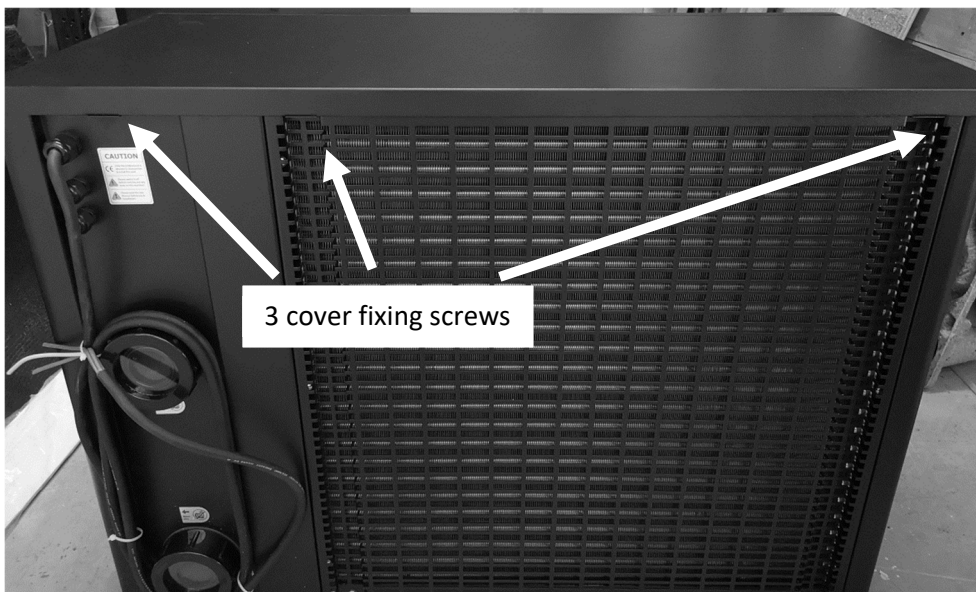


Installation of the KL20-KLI communication module

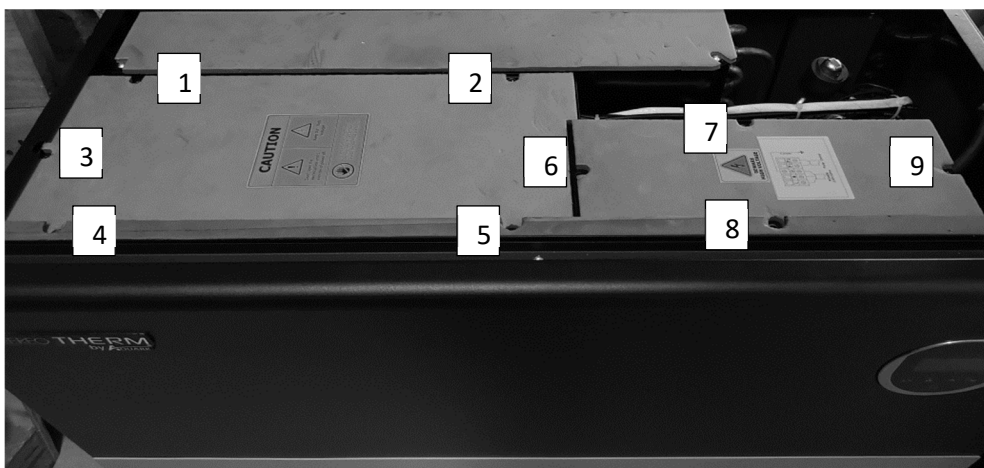


I. Board connection

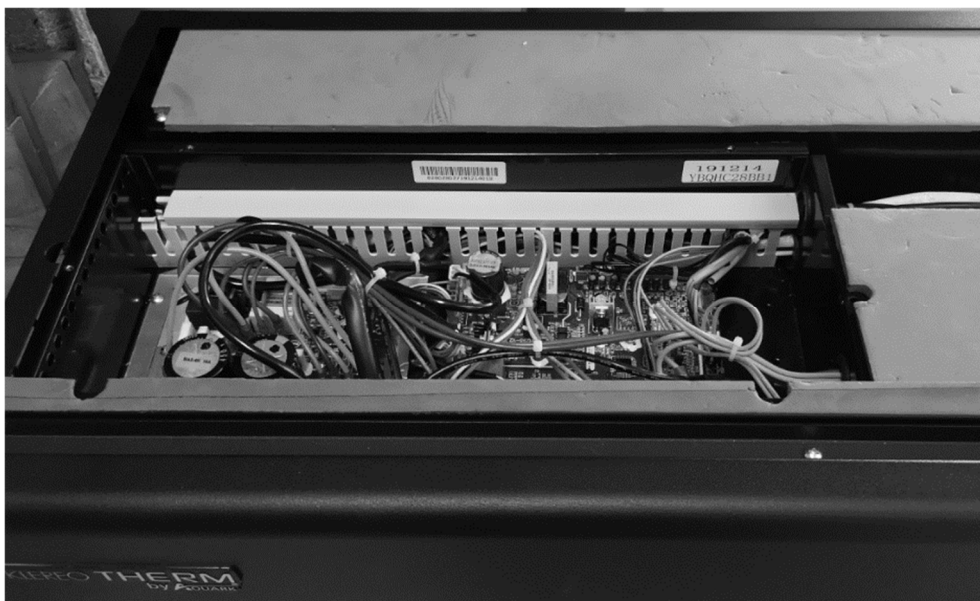
1. Switch off the power supply of the heat pump (HP)
2. Remove the top cover of the HP (3 screws at the back)



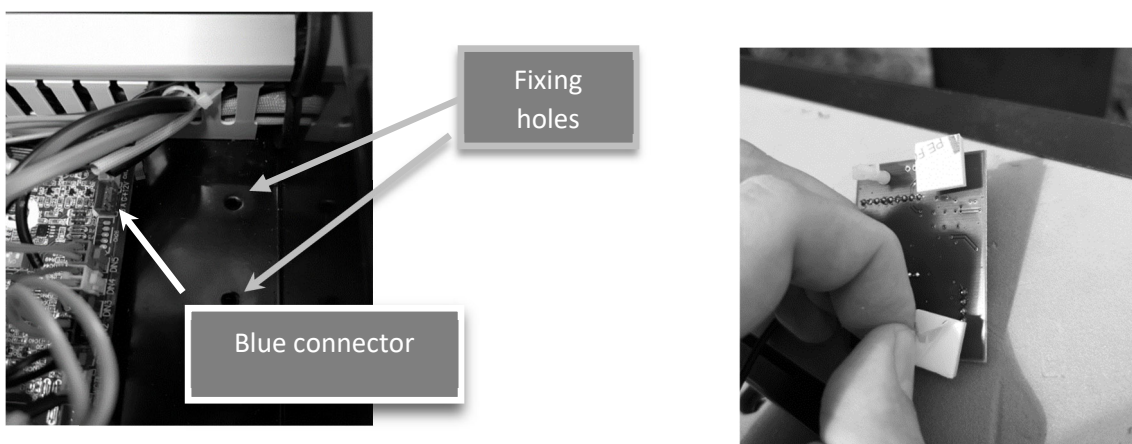
3. Remove the covers from the electronic boards (9 upper screws)



4. Remove the left cover (main board)

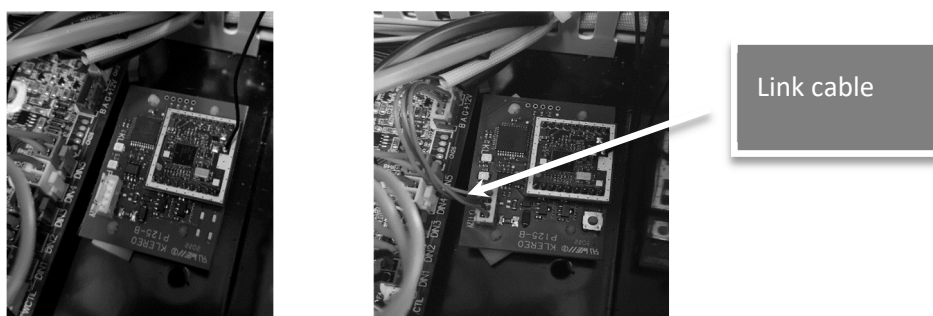


5. Locate the 2 fixing points and the 4-pins "blue" connector



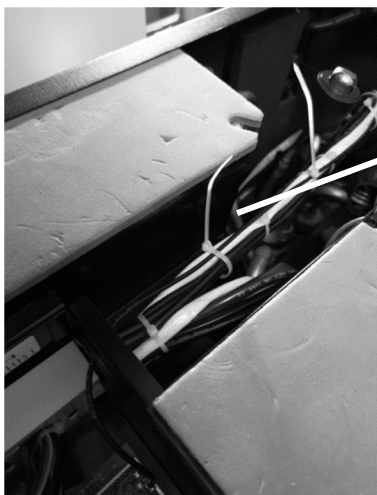
6. Insert the communication board

7. Connect the cable between the KL20-KLI board and the blue connector of the main board. Marking « B A G +12V »



**Never plug the link cable in the white connector of the heatpump mainboard !
This will cause permanent damages for the electronics components**

8. Route the antenna cable to the outside



Attach the antenna using the plastic clamps



Attach the antenna

9. Power up the heatpump
10. Check that the LED 'P' is on.

II. Radio matching

1. Check the Klereo software version.
 - ➔ The Software version need to be **2.04A or greater.**
 - ➔ If this is not the case, you need to update both **the Klereo mainboard and then the display board.**
2. Select the heat pump mode
 - ➔ Switch to INSTALLER mode
 - ➔ Select « KlereoTherm H.Pump» in the menu
« Parameters/Configuration/Heating/Select heating »
3. Make sure that :
 - ➔ KL20-KLI is properly connected and the "P" Led in on
 - ➔ The heat pump and the KL20-KLI are powered for **more than 5 minutes**

4. **Switch off** the heat-pump using its circuit breaker
5. Wait for 20s
6. **Switch on** the heat-pump
7. Wait for 20s
8. **Switch off**
9. Wait for 20s
10. **Switch on**
11. Start radio matching from the Klereo system
 - ➔ Select «KlereoTherm H.Pump » from the menu
« Parameters/Configuration/Radio matching »

Matching is in progress. It can take up to 1 minute..

Klereo displays the message “PAC KlereoTherm appairée » when the operation is successful

12. Verify that the matching is OK using the menu « Parameters/Tests Installation/Heat pump check »
 - ➔ Verify the LINK status from the display
 - “Checking in progress” is blinking ➔ verification in progress
 - “OK” ➔ verifications done, all ok

Optional verification if KL20-KLI is accessible

- ➔ ‘P’ Led is fixed ON, (link with KL20-KLI ⇔ Heatpump ok)
- ➔ ‘KL’ Led is fixed ON, (link with KL20-KLI ⇔ Klereo ok)



5 rue du Chant des Oiseaux

78360 MONTESSON

Email : contact@klereo.com

(1) Facturation selon les conditions tarifaires de l'OBL de l'appelant – tarifs applicables en France métropolitaine depuis tout poste fixe (hors publiphones)